



**Bobcat**<sup>®</sup>

**New M2-Series  
Compact Track Loaders**



***One Tough Animal.***



# Why Compact Track Loaders?

Since inventing the world's first true compact loader in 1958, Bobcat has constantly improved on its original concept: a tough, agile and versatile compact machine that can tackle an incredible number of jobs. | Today, the innovation continues. The Bobcat® compact track loader features a superior design that outperforms other brands while maximizing your uptime and delivering unmatched comfort.



# Performance

## Move Faster. Finish Sooner.

Now you'll spend less time traveling across a jobsite or between jobs. Move faster – and get the job done sooner – with new two-speed for Bobcat compact track loaders. This time-saving feature boosts your top travel speed by as much as 57 percent.

### Big Results – Small Package

Compact track loaders weigh more than skid-steer loaders of the same size. Thanks to tracks, that weight is spread out over a wider area for increased flotation, minimal ground disturbance, higher pushing force and better lifting of larger loads.

### Designed for Durability

Heavy-duty construction, component protection and superior design with minimal moving parts increase the service life of your loader – no matter which undercarriage you choose.

Great performance doesn't only come from a high horsepower engine. Bobcat loaders use the machine's design and balance to deliver more usable horsepower. We build machines with the right balance between engine and pump, plus a weight distribution that delivers powerful breakout forces and faster cycle times. If you need to work quicker, lift more and outperform the competition, Bobcat compact track loaders are the only choice.

### Superior Pushing Force

With more surface area in contact with the ground, direct-drive motors and a perfect balance between machine weight and horsepower, the pushing force of Bobcat compact track loaders is second to none.

### Expand Your Season

Compact track loaders have a low ground pressure that allows you to work more productively in soft, sandy, wet or muddy conditions. You could gain as much as two months of extra work per year: get on the job a month sooner in the spring, and get off the job a month later in the fall.

### Low Impact

High-flotation Bobcat compact track loaders minimize damage to lawns, natural terrain and other established surfaces for fewer profit-eating surface repairs.

### Faster Cycle Times

Hydraulic pumps in Bobcat loaders are matched to cylinder size and loader lift capacity to provide fast cycle times that help you get the job done faster.

### **Hydraulic Bucket Positioning**

Optional hydraulic bucket positioning keeps your bucket level when raising lift arms, reducing spillage and allowing you to work more efficiently.

### **Powerful Breakout Forces**

High-efficiency hydraulic pumps deliver more power matched to demand and provide better breakout forces.

### **More Torque**

Bobcat loaders reach maximum torque at a lower rpm to minimize stalling while saving time and fuel.

### **Control in Your Hands**

With Bobcat compact track loaders, you can feel and control the loader's drive, engine torque and tractive effort – so you can push your machine to the limit without an engine anti-stall system robbing you of power when you need it the most.

### **Deluxe Instrumentation Panel**

Deluxe instrumentation enables operators to set the parameters of the grading system and get real-time information during operation – such as distance-to-target for both elevation and slope – without the need for a separate control box inside the cab.

*Optional non-marking multi-bar lug rubber tracks won't leave black rubber marks on hard surfaces like concrete.*





## Improved Visibility

Visibility is increased in all directions on M-Series loaders. The rear window is 14 percent larger, and the top window is 43 percent larger. This provides a big advantage when loading a truck or using attachments. All-around visibility is central to the design of the cab on Bobcat loaders.

### Cab-Forward Design

The new cab-forward design moves the operating area closer to the attachment, giving you a better vantage point to see your work.

### Front Visibility

Comfortably see your work from the seat through a single, curved pane of glass that delivers as much as 50 percent more glass surface area than other manufacturers. Powerful lighting gives you a great view for night operation.

## Pressurized Cab

In your line of work, you have to dive right in – where the dirt, dust, mud and debris are at their worst. Bobcat M-Series loaders with enclosed cabs have a best-in-class pressurized interior space that keeps dust to a minimum, keeping operators clean and comfortable.

### Optional Keyless Panel

If you're not ready for the robust functionality of deluxe instrumentation, but you'd like the convenience of keyless start with the added security of an owner-defined numeric code, choose the optional security panel upgrade.



# NEW SONIC

## **Sonic Tracer/Slope Sensor Control**

The sonic tracer/slope sensor kit enables operators to create an accurate cross-slope or precisely grade when laser receivers and transmitters are limited by jobsite obstacles or the grade needed does not follow a plane.

## **Uptime Protection**



### **Machine Shutdown Protection**

Bobcat loaders come standard with automatic shutdown that monitors engine and hydraulic functions. The system alerts the operator and actually shuts the machine down – lessening the chance of damage to the engine or hydraulic components.

### **Self Diagnostics**

On-board diagnostics efficiently troubleshoot problems in the field, and in many cases, prevent them from occurring in the first place. Downloadable machine performance history cuts a huge chunk out of the time needed to identify problems and correct them.

### **Battery Run-Down Protection**

The lighting circuit automatically shuts down to prevent accidental battery discharge.

### **Electronic Protection**

Bobcat electronics meet or exceed military IP67 requirements for sealing, moisture, shock and vibration. You can work in harsh conditions, or power wash your loader without having to worry if it will start when you are finished. Bobcat electronics feature more watertight, corrosion-resistant connectors than other manufacturers – so you don't slow down from faulty connections.

### **Protected Hoses and Quick Couplers**

The integrated, pressure-release quick couplers are mounted directly into the front plate of the lift arm – with no exposed hoses to damage. A steel guard extends beyond the coupler, protecting it even further.

[BobcatAdvantage.com/comprack](http://BobcatAdvantage.com/comprack)

# Smart Cooling



The Bobcat cooling system is smarter because of its superior protection, dual-path cooling efficiency and exclusive SmartFAN.

## Quieter Operation

Up to 30 percent quieter than ordinary cooling fans, the hydraulically powered SmartFAN senses the temperature of the machine and only turns as fast as needed. Work in extreme conditions with less concern about overheating.

## More Efficient Cooling

Bobcat loaders have a patented, dual-path cooling system that draws cool, clean air from above, pulls warm air out of the engine compartment and forces it out two side vents, directing hot air away from the operator, cooling more efficiently and keeping engine components clean. Other systems usually pull dirty air over the top of the tires or from the rear of the loader.

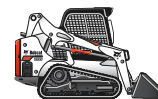
## Protected Cooling Location

Some manufacturers still place radiators immediately inside the tailgate where the cooling package can be damaged by rebar, sticks or other items that can poke through the tailgate ventilation holes. The Bobcat radiator and hydraulic oil cooler are well-protected between the frame uprights, above the engine. This also leaves the rear of the engine freely accessible for maintenance checks.



Better cooling  
in extreme conditions.

# Specifications and Features Compact Track Loaders



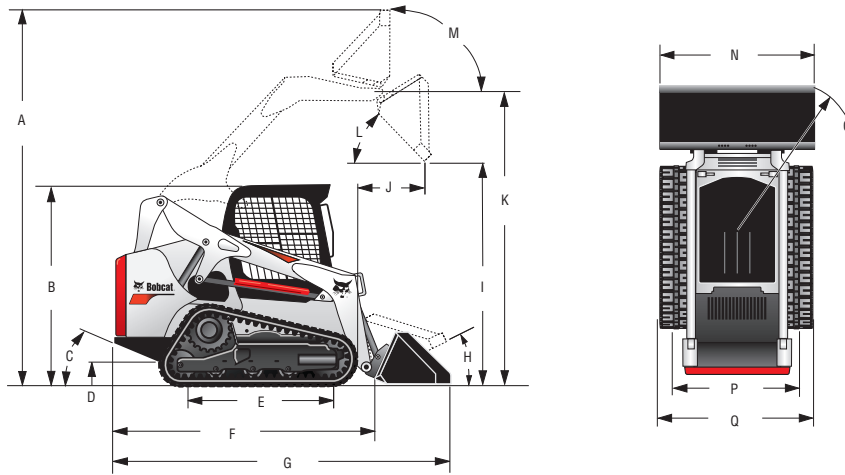
	T450	T550	T590	T595
Loader Series	M2-Series	M2-Series	M2-Series	M2-Series
Rated Operating Capacity (ROC) (35% of tipping load)	1,400 lb. (635 kg)	1,995 lb. (905 kg)	2,100 lb. (953 kg)	2,200 lb. (998 kg)
ROC with Counterweight (optional)	Counterweight kits are available to increase ROC. See dealer on availabilities and ROC increases for your loader.			
Operating Capacity (50% of tipping load)	2,000 lb. (907 kg)	2,850 lb. (1293 kg)	3,000 lb. (1361 kg)	3,142 lb. (1425 kg)
Tipping Load	4,000 lb. (1814 kg)	5,700 lb. (2585 kg)	6,000 lb. (2722 kg)	6,285 lb. (2851 kg)
ROC with optional Roller Suspension	—	1,895 lb. (860 kg)	1,950 lb. (885 kg)	2,050 lb. (930 kg)
Height to Hinge Pin	109.5 in. (2781 mm)	114.5 in. (2908 mm)	119.0 in. (3023 mm)	119.0 in. (3023 mm)
Lift Arm Path	Radius	Radius	Vertical	Vertical
<b>Size and Speed</b>				
Operating Weight	6,148 lb. (2789 kg)	7,557 lb. (3428 kg)	7,822 lb. (3548 kg)	8,055 lb. (3654 kg)
Bucket Width	56 in. (1422 mm)	68 in. (1727 mm)	68 in. (1727 mm)	68 in. (1727 mm)
Cab Height	77.8 in. (1972 mm)	77.8 in. (1972 mm)	77.8 in. (1972 mm)	77.8 in. (1972 mm)
Travel Speed – Single Speed	7.3 mph (11.7 km/hr.)	7.1 mph (11.4 km/hr.)	7.1 mph (11.4 km/hr.)	7.1 mph (11.4 km/hr.)
Travel Speed – High Range (optional 2-Speed travel)	11.0 mph (17.7 km/hr.)	10.4 mph (16.7 km/hr.)	10.4 mph (16.7 km/hr.)	10.4 mph (16.7 km/hr.)
<b>Engine</b>				
Horsepower	61 hp	66 hp	66 hp	74 hp
Type	Turbo Diesel	Turbo Diesel	Turbo Diesel	Turbo Diesel
Fuel Tank Capacity	17.3 gal. (65.5 L)	36.5 gal. (138.2 L)	36.5 gal. (138.2 L)	36.5 gal. (138.2 L)
Horsepower Management	— Included with SJC Option			
Diesel Particulate Filter (DPF) Requirement	No	No	No	No
Diesel Exhaust Fluid (DEF)	No	No	No	No
<b>Uptime Protection</b>				
Bobcat SmartFAN	Std	Std	Std	Std
Cooling System	Std	Std	Std	Std
Machine Shutdown Protection	Std	Std	Std	Std
<b>Tracks/Undercarriage</b>				
Track Width – Standard	11.8 in. (300 mm)	12.6 in. (320 mm)	12.6 in. (320 mm)	12.6 in. (320 mm)
Track Width – Optional	—	15.75 in. (400 mm)	15.75 in. (400 mm)	15.75 in. (400 mm)
Ground Pressure (with standard tracks)	4.7 psi (0.032 MPa)	4.9 psi (0.03 MPa)	5.1 psi (0.04 MPa)	5.1 psi (0.04 MPa)
Ground Pressure (with optional tracks)	—	4.0 psi (0.03 MPa)	4.1 psi (0.03 MPa)	4.1 psi (0.03 MPa)
Length of Track on Ground	50.2 in. (1275 mm)	54.1 in. (1374 mm)	54.1 in. (1374 mm)	54.1 in. (1374 mm)
Roller Suspension	—	Opt	Opt	Opt
Grease Cylinder Track Tensioning	Std	Std	Std	Std
Roller Per Side	3 (Triple Flange)	4 (Triple Flange)	4 (Triple Flange)	4 (Triple Flange)
<b>Control Options</b>				
Bobcat Standard (Foot Pedals/Steering Levers)	Std	Std	Std	Std
Advanced Control System (ACS)	Opt	Opt	Opt	Opt
Selectable Joystick Control (SJC)	Opt	Opt	Opt	Opt
Radio Remote Control (SJC required)	Opt	Opt	Opt	Opt
Standard Control Power Assist	—	—	—	—
<b>Machine Features</b>				
2-Speed Travel	Opt	Opt	Opt	Opt
Air-Ride Seat	Opt	Opt	Opt	Opt
Back-Up Alarm and Horn	Std	Std	Std	Std
Bobcat Interlock Control System (BICS™)	Std	Std	Std	Std
Cab with Heat	Opt	Opt	Opt	Opt
Cab with Heat and Air Conditioning	Opt	Opt	Opt	Opt
Deluxe Instrumentation (includes keyless start)	Opt	Opt	Opt	Opt
Hydraulic Bucket Positioning	Opt	Opt	Opt	Opt
Mechanical Suspension Seat	Std	Std	Std	Std
Front and Rear Work Lights	Std	Std	Std	Std
Radio	Opt	Opt	Opt	Opt
Reversing Fan	Opt	Opt	Opt	Opt
Ride Control	Opt	Opt	Opt	Opt
ROPS/FOPS Approved Cab Structure	Std	Std	Std	Std
Side Lighting Kit	—	Opt	Opt	Opt
Sound Reduction Package	Opt	Opt	Opt	Opt
<b>Features for Attachments</b>				
Attachment Control Kit	Opt	Opt	Opt	Opt
Bob-Tach Mounting System	Std	Std	Std	Std
Power Bob-Tach System	Opt	Opt	Opt	Opt
Fingertip Auxiliary Hydraulics Control	Std	Std	Std	Std
Hydraulic System Pressure	3,300 psi (22.75 MPa)	3,500 psi (24.1 MPa)	3,500 psi (24.1 MPa)	3,500 psi (24.1 MPa)
Hydraulic Standard Flow	16.7 gpm (63.2 L/min.)	17.1 gpm (64.7 L/min.)	17.1 gpm (64.7 L/min.)	17.1 gpm (64.7 L/min.)
Hydraulic High Flow (optional)	—	26.7 gpm (101.1 L/min.)	26.7 gpm (101.1 L/min.)	26.7 gpm (101.1 L/min.)
Pressure Release Hydraulic Quick Couplers	Std	Std	Std	Std
Speed Management	— Included with SJC Option			



# Specifications and Features Compact Track Loaders



	<b>T630</b>	<b>T650</b>	<b>T770</b>	<b>T870</b>
Loader Series	M2-Series	M2-Series	M2-Series	M2-Series
Rated Operating Capacity (ROC) (35% of tipping load)	2,100 lb. (953 kg)	2,570 lb. (1166 kg)	3,475 lb. (1578 kg)	3,525 lb. (1599 kg)
ROC with Counterweight (optional)	Counterweight kits are available to increase ROC. See dealer on availabilities and ROC increases for your loader.			
Operating Capacity (50% of tipping load)	3,000 lb. (1361 kg)	3,670 lb. (1665 kg)	4,960 lb. (2250 kg)	5,030 lb. (2282 kg)
Tipping Load	6,000 lb. (2722 kg)	7,343 lb. (3331 kg)	9,929 lb. (4503 kg)	10,072 lb. (4569 kg)
ROC with optional Roller Suspension	2,100 lb. (953 kg)	2,570 lb. (1166 kg)	3,325 lb. (1508 kg)	—
Height to Hinge Pin	121.0 in. (3073 mm)	124.0 in. (3149 mm)	132.0 in. (3353 mm)	144.0 in. (3657 mm)
Lift Arm Path	Radius	Vertical	Vertical	Vertical
<b>Size and Speed</b>				
Operating Weight	8,655 lb. (3926 kg)	9,320 lb. (4227 kg)	10,465 lb. (4796 kg)	12,925 lb. (5862 kg)
Bucket Width	74 in. (1880 mm)	74.0 in. (1880 mm)	80.0 in. (2032 mm)	84.8 in. (2153 mm)
Cab Height	81.3 in. (2065 mm)	81.3 in. (2065 mm)	81.3 in. (2065 mm)	83.4 in. (2118 mm)
Travel Speed – Single Speed	6.6 mph (10.6 km/hr.)	6.6 mph (10.6 km/hr.)	6.6 mph (10.6 km/hr.)	7.2 mph (11.5 km/hr.)
Travel Speed – High Range (optional 2-Speed travel)	10.7 mph (17.2 km/hr.)	10.7 mph (17.2 km/hr.)	10.7 mph (17.2 km/hr.)	11.4 mph (18.3 km/hr.)
<b>Engine</b>				
Horsepower	74 hp	74 hp	92 hp	100 hp
Type	Turbo Diesel	Turbo Diesel	Turbo Diesel	Turbo Diesel
Fuel Tank Capacity	43.9 gal. (166.4 L)	43.9 gal. (166.4 L)	43.9 gal. (166.4 L)	32.3 gal. (122.3 L)
Horsepower Management	●—————● Included with SJC Option			Std
Diesel Particulate Filter (DPF) Requirement	No	No	No	No
Diesel Exhaust Fluid (DEF)	No	No	No	No
<b>Uptime Protection</b>				
Bobcat SmartFAN	Std	Std	Std	Std
Cooling System	Std	Std	Std	Std
Machine Shutdown Protection	Std	Std	Std	Std
<b>Tracks/Undercarriage</b>				
Track Width – Standard	12.6 in. (320 mm)	12.6 in. (320 mm)	17.7 in. (450 mm)	17.7 in. (450 mm)
Track Width – Optional	17.7 in. (450 mm)	17.7 in. (450 mm)	—	—
Ground Pressure (with standard tracks)	5.3 psi (0.037 MPa)	5.7 psi (0.039 MPa)	4.2 psi (0.029 MPa)	4.9 psi (0.033 MPa)
Ground Pressure (with optional tracks)	3.8 psi (0.027 MPa)	4.2 psi (0.029 MPa)	—	—
Length of Track on Ground	58.5 in. (1486 mm)	58.5 in. (1486 mm)	63.7 in. (1618 mm)	68.9 in. (1749 mm)
Roller Suspension	Opt	Opt	Opt	Std
Grease Cylinder Track Tensioning	Std	Std	Std	Std
Roller Per Side	4 (Triple Flange)	4 (Triple Flange)	5 (Triple Flange)	4 (Triple Flange)
<b>Control Options</b>				
Bobcat Standard (Foot Pedals/Steering Levers)	Std	Std	Std	—
Advanced Control System (ACS)	Opt	Opt	Opt	—
Selectable Joystick Control (SJC)	Opt	Opt	Opt	Opt
Radio Remote Control (SJC required)	Opt	Opt	Opt	Opt
Standard Control Power Assist	—	—	—	Std
<b>Machine Features</b>				
2-Speed Travel	Opt	Opt	Opt	Std
Air-Ride Seat	Opt	Opt	Opt	Opt
Back-Up Alarm and Horn	Std	Std	Std	Std
Bobcat Interlock Control System (BICS™)	Std	Std	Std	Std
Cab with Heat	Opt	Opt	Opt	Opt
Cab with Heat and Air Conditioning	Opt	Opt	Opt	Opt
Deluxe Instrumentation (includes keyless start)	Opt	Opt	Opt	Opt
Hydraulic Bucket Positioning	Opt	Opt	Opt	Opt
Mechanical Suspension Seat	Std	Std	Std	Std
Front and Rear Work Lights	Std	Std	Std	Std
Radio	Opt	Opt	Opt	Opt
Reversing Fan	Opt	Opt	Opt	Opt
Ride Control	Opt	Opt	Opt	Opt
ROPS/FOPS Approved Cab Structure	Std	Std	Std	Std
Side Lighting Kit	Opt	Opt	Opt	Opt
Sound Reduction Package	Opt	Opt	Opt	Opt
<b>Features for Attachments</b>				
Attachment Control Kit	Opt	Opt	Opt	Opt
Bob-Tach Mounting System	Std	Std	Std	Std
Power Bob-Tach System	Opt	Opt	Opt	Opt
Fingertip Auxiliary Hydraulics Control	Std	Std	Std	Std
Hydraulic System Pressure	3,500 psi (24.1 MPa)	3,500 psi (24.1 MPa)	3,500 psi (24.1 MPa)	3,500 psi (24.1 MPa)
Hydraulic Standard Flow	23.0 gpm (87.1 L/min.)	23.0 gpm (87.1 L/min.)	23.0 gpm (87.1 L/min.)	23.0 gpm (87.1 L/min.)
Hydraulic High Flow (optional)	30.5 gpm (115.5 L/min.)	30.5 gpm (115.5 L/min.)	36.6 gpm (138.5 L/min.)	36.6 gpm (138.5 L/min.)
Pressure Release Hydraulic Quick Couplers	Std	Std	Std	Std
Speed Management	●—————● Included with SJC Option			Std



	T450	T550	T590	T595
A	141.9 in. (3604 mm)	149.1 in. (3787 mm)	153.6 in. (3901 mm)	153.6 in. (3901 mm)
B	77.8 in. (1972 mm)	77.8 in. (1972 mm)	77.8 in. (1972 mm)	77.8 in. (1972 mm)
C	28°	27.8°	28.8°	28.8°
D	8.4 in. (213 mm)	7.4 in. (188 mm)	7.4 in. (188 mm)	7.4 in. (188 mm)
E	50.2 in. (1275 mm)	55.2 in. (1402 mm)	55.2 in. (1402 mm)	55.2 in. (1402 mm)
F	98.4 in. (2499 mm)	104.6 in. (2657 mm)	104.6 in. (2657 mm)	104.6 in. (2657 mm)
G	126.6 in. (3216 mm)	133 in. (3378 mm)	133 in. (3378 mm)	133 in. (3378 mm)
H	28°	30°	30°	30°
I	83.8 in. (2199 mm)	86.8 in. (2205 mm)	91.3 in. (2319 mm)	91.3 in. (2319 mm)
J	23.5 in. (597 mm)	19.3 in. (490 mm)	34.9 in. (887 mm)	34.9 in. (887 mm)
K	109.5 in. (2781 mm)	114.5 in. (2908 mm)	119 in. (3023 mm)	119 in. (3023 mm)
L	40°	42°	42°	42°
M	91°	97°	97°	97°
N	56.0 in. (1422 mm)	68 in. (1727 mm)	68 in. (1727 mm)	68 in. (1727 mm)
O	77.9 in. (1979 mm)	80 in. (2032 mm)	80 in. (2032 mm)	80 in. (2032 mm)
P	43.2 in. (1097 mm)	54.4 in. (1382 mm)	54.4 in. (1382 mm)	54.4 in. (1382 mm)
Q	55.0 in. (1397 mm)	67 in. (1702 mm)	67 in. (1702 mm)	67 in. (1702 mm)

	T650	T750	T770	T870
A	158.5 in. (4026 mm)	166.6 in. (4232 mm)	166.6 in. (4232 mm)	184.6 in. (4689 mm)
B	81.3 in. (2065 mm)	81.3 in. (2065 mm)	81.3 in. (2065 mm)	83.4 in. (2118 mm)
C	31°	31°	31°	33°
D	8.1 in. (206 mm)	8.1 in. (206 mm)	8.1 in. (206 mm)	8.6 in. (218 mm)
E	59 in. (1499 mm)	63.7 in. (1618 mm)	63.7 in. (1618 mm)	68.9 in. (1749 mm)
F	108.4 in. (2753 mm)	114.3 in. (2903 mm)	114.3 in. (2903 mm)	119.3 in. (3030 mm)
G	136.8 in. (3474 mm)	141.6 in. (3597 mm)	141.6 in. (3597 mm)	153.9 in. (3910 mm)
H	31°	32°	32°	31°
I	96.3 in. (2447 mm)	104.3 in. (2649 mm)	104.3 in. (2649 mm)	112.3 in. (2853 mm)
J	34.2 in. (870 mm)	33.6 in. (853 mm)	33.6 in. (853 mm)	36.5 in. (927 mm)
K	124 in. (3149 mm)	132 in. (3353 mm)	132 in. (3353 mm)	144 in. (3657 mm)
L	42°	42°	42°	42°
M	97°	98°	98°	98°
N	74 in. (1880 mm)	80 in. (2032 mm)	80 in. (2032 mm)	84.8 in. (2153 mm)
O	87.7 in. (2228 mm)	88 in. (2235 mm)	88 in. (2235 mm)	99 in. (2514 mm)
P	60.3 in. (1532 mm)	60.3 in. (1532 mm)	60.3 in. (1532 mm)	65.3 in. (1658 mm)
Q	72.9 in. (1851 mm)	78 in. (1981 mm)	78 in. (1981 mm)	83 in. (2108 mm)



### Training Resources

Train operators and technicians in the safe operation and servicing of Bobcat equipment. Operator training courses, safety videos and other training materials are available at your Bobcat dealer's parts department or online at [Bobcat.com/training](http://Bobcat.com/training)

\*Certain specification(s) are based on engineering calculations and are not actual measurements. Specification(s) are provided for comparison purposes only and are subject to change without notice. Specification(s) for your individual Bobcat equipment will vary based on normal variations in design, manufacturing, operating conditions, and other factors.