



# NEW HOLLAND

**LM1133 LM1330 LM1333 LM1340 LM1343**  
**LM1345 LM1443 LM1445 LM1745**



## TELEHANDLERS TURBO

PERFECT VISIBILITY IN ALL DIRECTIONS

OUTSTANDING STABILITY AND MANOEVRABILITY

MODERN CNH ENGINE COMPLYING WITH EUROPEAN STANDARDS 97/68/EC



**NEW HOLLAND**

**CONSTRUCTION**

**BUILT AROUND YOU**

## PRODUCT RANGE AND ADVANTAGES



**N**ew Holland **offers** - in the range between 11 and 17 meters lifting height - **9 models** to allow customer to choose the most suitable machine for his specific job. All models share the following winning features and customer advantages:

- Perfect visibility to the top of the arm fully raised and all around, to operate in complete relax
- Outstanding stability for maximum performances and safety
- Completely simultaneous movements can be achieved with maximum precision for extra productivity
- High transfer speed thanks to a perfectly modulated Power Shift transmission which, in addition, grants an exceptional traction force and digging capability
- Wide choice of attachments for different applications to maximise machine versatility



### AVAILABLE STABILIZERS

**T**wo different types of stabilisers, offered according to model, to satisfy customer needs:

■ **Narrow type** => when they must stay within machine width while operating in close quarters

■ **Wide type** => for applications that require total operational stability



# VISIBILITY AND OPERATIONAL COMFORT



## T UNIQUE CAB

The spacious cab offers the best visibility available on the market. Its rounded front profile and large glass area of 8.1 m<sup>2</sup>, give the operator total control of the arm in every position, as well as of right, left and rear side when manoeuvring in restricted working spaces.

An exceptionally wide door, opens 180° and is constructed in two sections to enable the upper section to be opened independently from the lower one. Both door sections may be secured at the fully open position for operator safety and convenience. Outstanding operator comfort and confidence for increased daily production



## ERGONOMIC AND ELEGANT CAB

**T**he elegant and wide cab is more than a working post. The instruments and controls are ergonomically located to ensure unbeatable comfort and safety. The cab internal surfaces are coated with ABS plastic for quick, easy and effective cleaning.



**T**he standard, continuously adjustable, tilting steering column grants a full range of operator adjustments to provide his most suitable driving position.

**N**ew Holland Telehandlers, feature a single lever multifunction manipulator. The boom lifting/lowering and the fork or bucket closing/opening are hydraulically controlled by moving the manipulator respectively back & forth and left & right. The boom extension/retraction is operated, according to the model, by an on/off electrical button or by an electro-proportional "rocker".



**A simple, modern and comfortable manipulator which provides maximum precision in load positioning for fast, safe and productive operations.**



# HYDRAULIC SYSTEM & TRANSMISSION

## HYDRAULICS

The New Holland Telehandlers feature a “Load Sensing – Flow Sharing” hydraulic system which guarantee completely simultaneous and independent movements as well as smooth and easy operation in all type of application.



## TIER 3A ENGINE

All telehandlers are equipped with the last generation of CNH diesel engines with 4.5 litres displacement. These modern power plants, with different configurations and settings, develop the right power requested by each model while complying with European Standards 97/68/EC.

## TRANSMISSION

The transmission, Power Shift 4 + 3 speeds type, grants:

- Superior traction force for outstanding digging capacity
- Unrivalled transport speed for faster cycles
- Exceptionally smooth modulation while changing gear or selecting forward and reverse



A fast, aggressive, smooth transmission to grant maximum operator comfort and production increase.



## EASE OF OPERATION

### STEERING CAPABILITY

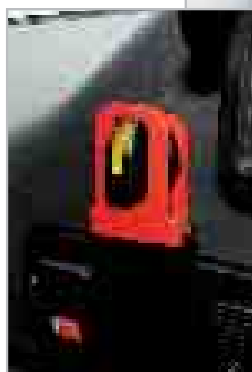
All New Holland Telehandlers feature outstanding steering capability:

- For 11.00 m lifting high model 3.40 m
- For 13.00/14.00/17.00 lifting high models 3.89 m

They also feature 4 wheel steering with 3 different positions which may be easily selected by a switch, protected against accidental inputs, ergonomically positioned inside the cab.

Therefore the operator can choose the most suitable steering configuration according to the type of job in his hands:

- **Front wheels steering only:** most suitable for travelling and for transport operations;
- **All wheels steering:** for excellent mobility in confined spaces;
- **Crab steering:** to easy clean-up alongside walls or buildings without any complicated manoeuvres.



## LIFTING CAPACITIES

Exceptional lifting capacity and operational maneuverability and stability

LM1133 TURBO - 3300 kg  
LM1330 TURBO - 3000 kg  
LM1333 TURBO - 3300 kg

LM1340 TURBO - 4000 kg  
LM1343 TURBO - 4300 kg  
LM1345 TURBO - 4500 kg

LM1443 TURBO - 4300 kg  
LM1445 TURBO - 4500 kg  
LM1745 TURBO - 4500 kg



PERFORMANCE		LM1133
Maximum lift capacity (at 500 mm from fork heel)	kg	3300
Maximum lift height	m	10.60
Lift capacity at maximum reach	kg	800
Lift capacity at maximum lift height	kg	2000
Reach fully raised	m	2.40
Maximum forward reach	m	7.70
Height with max load (3300 kg)	m	6.80
Break out force	daN	5800
Operating weight	kg	8700

ENGINE		
Make and model		CNH 4TC 4.5
Type		Turbo
Total displacement	litr	4.5
Net flywheel power (ISO 14396)	kW/hp	74/99
Max torque	Nm	400@1400 rpm

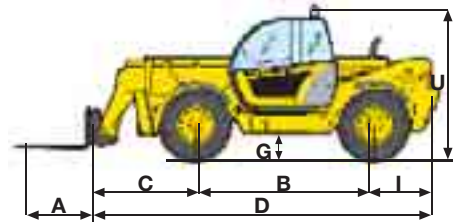
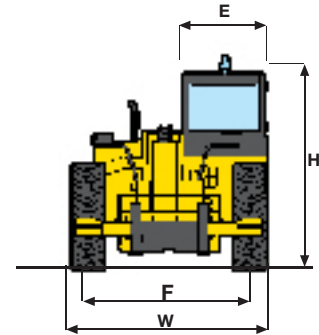
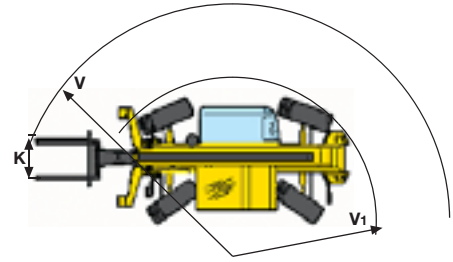
TRANSMISSION		
Type		PowerShift
Forward/Reverse speeds		4/3
Max speed on road**	Km/h	35

\*\* Max. speed limited according to the country's legislations

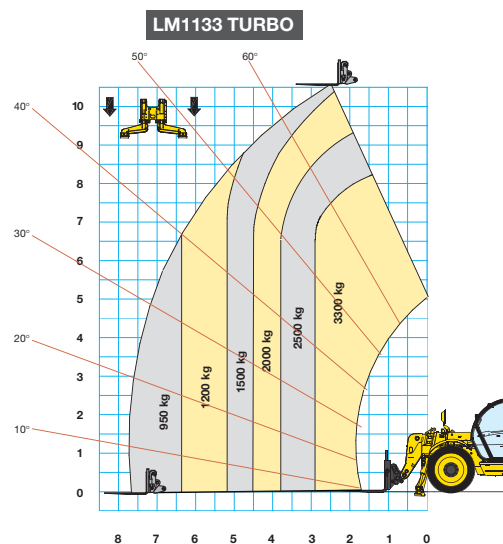
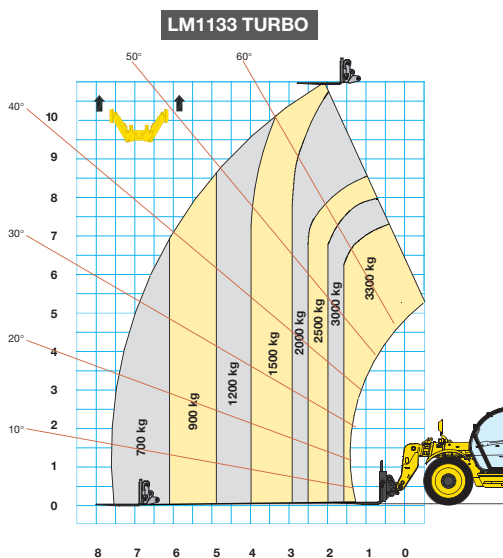
HYDRAULIC SYSTEM		
Type		Load Sensing
Hydraulic controls		Servo
Simultaneous movement		yes
Hydraulic pump		gear
Hydraulic flow	l/min	130
Hydraulic pressure	bar	240

CAPACITIES		
Fuel tank	litr	125
Hydraulic tank	litr	110

DIMENSIONS (with MITAS 405/70x24)	A	B	C	D	E	F	G	H	I	K	U	V	V <sub>1</sub>	W
mm	1200	3010	1615	5375	1000	1875	420	2400	750	1260	2470	5420	3400	2340



TYRES		
405/70x24		MITAS
400/80x24		DUNLOP
15.5R25		MICHELIN



# LM1330/LM1333

PERFORMANCE		LM1330	LM1333 with stab. down
Maximum lift capacity (at 500 mm from fork heel)	kg	3000	3300
Maximum lift height	m	12.7	13.0
Lift capacity at maximum reach	kg	400	1250
Lift capacity at maximum lift height	kg	1500	2500
Reach fully raised	m	2.00	1.00
Maximum forward reach	m	8.75	8.75
Height with max load (3000/3300 kg)	m	6.80	8.40
Break out force	daN	7750	7750
Operating weight	kg	9550	9900

ENGINE		
Make and model		CNH 4TC 4.5
Type		Turbo
Total displacement	ltr	4.5
Net flywheel power (ISO 14396)	kW/hp	74/99
Max torque	Nm	400@1400 rpm

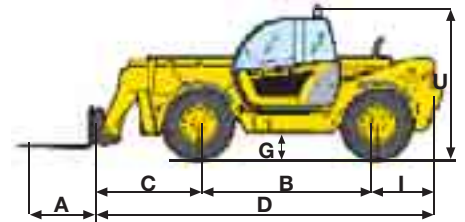
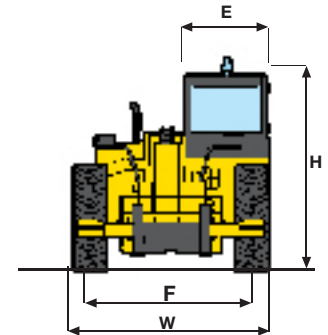
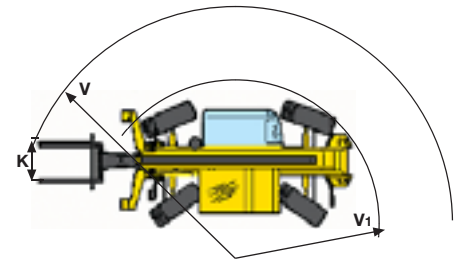
TRANSMISSION		
Type		PowerShift
Forward/Reverse speeds		4/3
Max speed on road**	Km/h	35

\*\* Max. speed limited according to the country's legislations

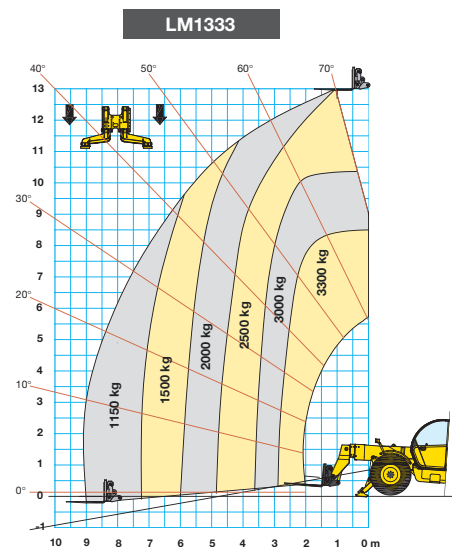
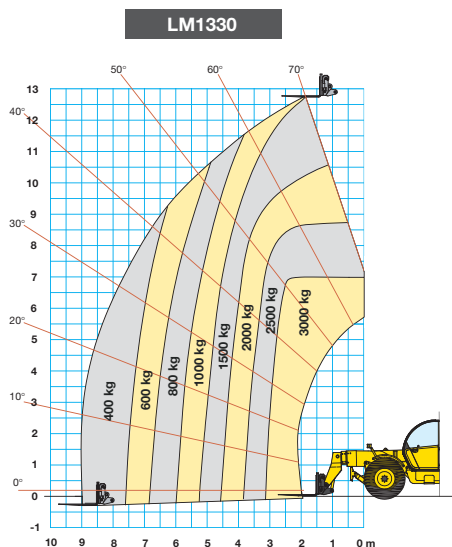
HYDRAULIC SYSTEM		
Type		Load Sensing
Hydraulic controls		Servo
Simultaneous movement		yes
Hydraulic pump		gear
Hydraulic flow	l/min	115
Hydraulic pressure	bar	240

CAPACITIES		
Fuel tank	ltr	135
Hydraulic tank	ltr	180

DIMENSIONS (With 24" rims)	A	B	C	D	E	F	G	H	I	K	T	U	V	V <sub>1</sub>	W
mm	1200	3120	1930	6150	1000	2050	402	2450	1100	1260	4600	2730	5445	3890	2445



TYRES	
15.5x22.5	MICHELIN
405/70x24	SOLIDEAL
400/80x24	DUNLOP
405/70x24	MITAS





# LM1340/LM1343/LM1345

PERFORMANCE		LM1340 without Stab.	LM1343 with small Stab.	LM1345 with large Stab.
Maximum lift capacity (at 500 mm from fork heel)	kg	4000	4300	4500
Maximum lift height	m	12.30	12.45	12.45
Lift capacity at maximum reach	kg	700	1700	1800
Lift capacity at maximum lift height	kg	2000/2600*	3600	4000
Reach fully raised	m	1.20	0.50	0.00
Maximum forward reach	m	8.65	8.65	8.65
Height with max load (4000/4500 kg)	m	8.50/9.50*	8.30	8.20
Break out force	daN	7750	7750	7750
Operating weight	kg	10200	10400	10630

\* Machine with rear axle lock (optional)

ENGINE	
Make and model	CNH 4TAA 4.5
Type	Turbo aftercooler
Total displacement	litr 4.5
Net flywheel power (ISO 14396)	kW/hp 88/118
Max torque	Nm 525@1250 rpm

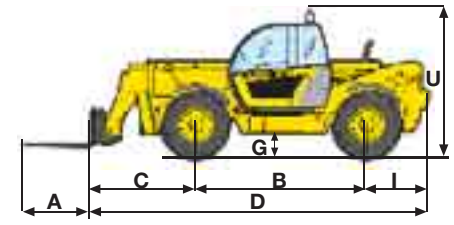
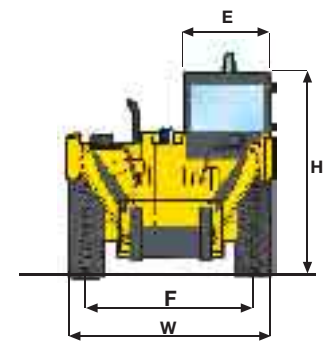
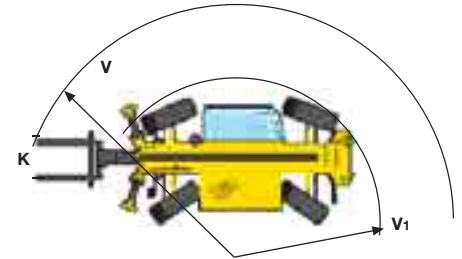
TRANSMISSION	
Type	PowerShift
Forward/Reverse speeds	4/3
Max speed on road**	Km/h 35

\*\* Max. speed limited according to the country's legislations

HYDRAULIC SYSTEM	
Type	Load Sensing
Hydraulic controls	Servo
Simultaneous movement	yes
Hydraulic pump	gear
Hydraulic flow	l/min 115
Hydraulic pressure	bar 240

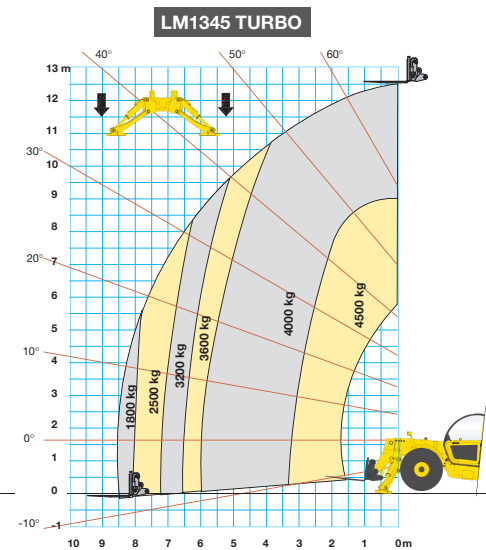
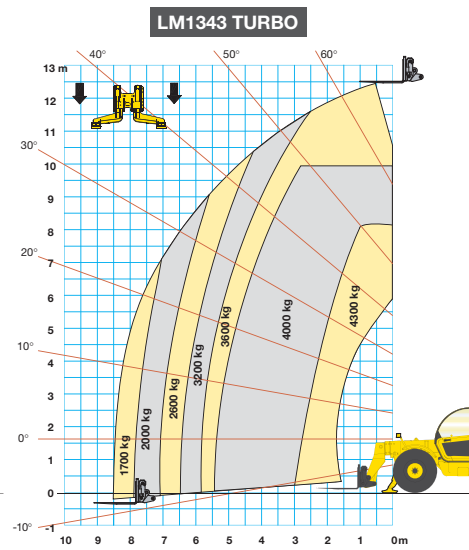
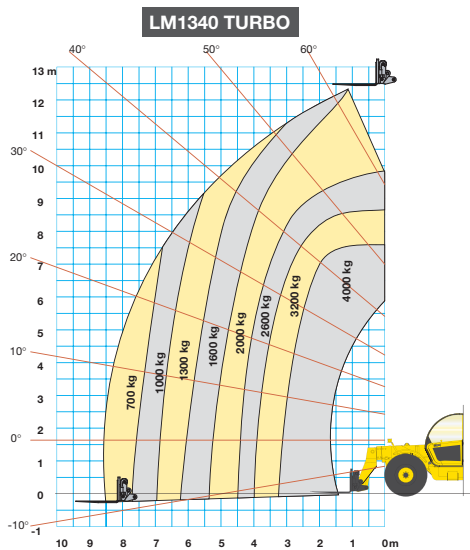
CAPACITIES	
Fuel tank	litr 135
Hydraulic tank	litr 180

DIMENSIONS (with MITAS 405/70x24)	A	B	C	D	E	F	G	H	I	K	T	U	V	V <sub>1</sub>	W
mm	1200	3120	1650	5870	1000	2050	402	2450	1100	1260	4396	2730	5204	3890	2445



TYRES	
15.5x22.5	MICHELIN
405/70X24	SOLIDEAL
400/80x24	DUNLOP
405/70x24	MITAS
13.00X24	GOODYEAR***

\*\*\* ONLY FOR LM1340&1345



whitout optional rear axle lock

EN 1459/B

# LM1443/LM1445

PERFORMANCE		LM1443 with small Stab.	LM1445 with large Stab.
Maximum lift capacity (at 500 mm from fork heel)	kg	4300/4000*	4500/4000*
Maximum lift height	m	13.55/13.30*	13.55/13.30*
Lift capacity at maximum reach	kg	1400/650*	1500/650*
Lift capacity at maximum lift height	kg	3000/1700*	3600/1700*
Reach fully raised	m	0.50/1.00*	0.30/1.00*
Maximum forward reach	m	9.33/9.33*	9.33/9.33*
Height with max load (4300/4500 kg)	m	8.90/7.30*	11.40/7.30*
Break out force	daN	7750/7750*	7750/7750*
Operating weight	kg	11330	11460

\*Machine with stabilizers up

ENGINE	
Make and model	CNH 4TAA 4.5
Type	Turbo aftercooler
Total displacement	ltr 4.5
Net flywheel power (ISO 14396)	kW/hp 88/118
Max torque	Nm 525@1250 rpm

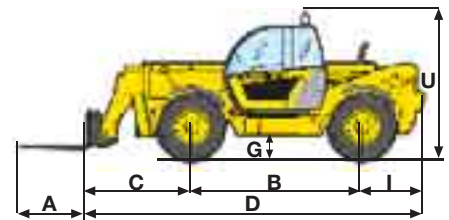
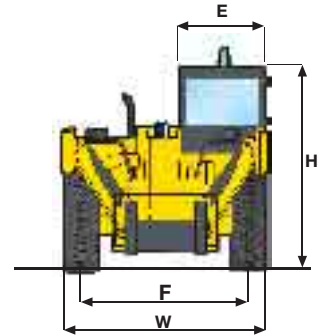
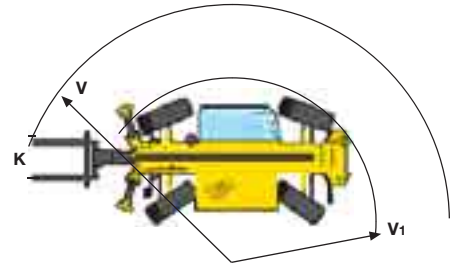
TRANSMISSION	
Type	PowerShift
Forward/Reverse speeds	4/3
Max speed on road**	Km/h 35

\*\* Max. speed limited according to the country's legislations

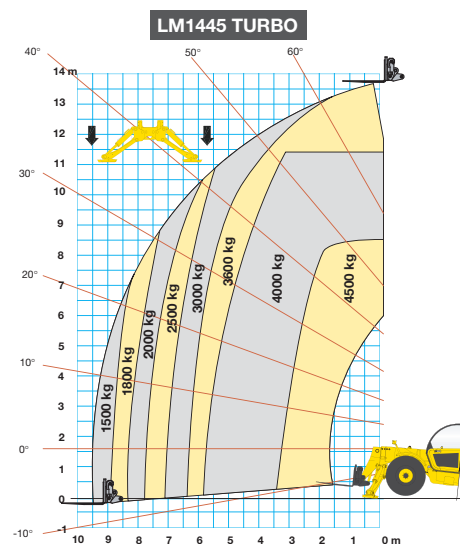
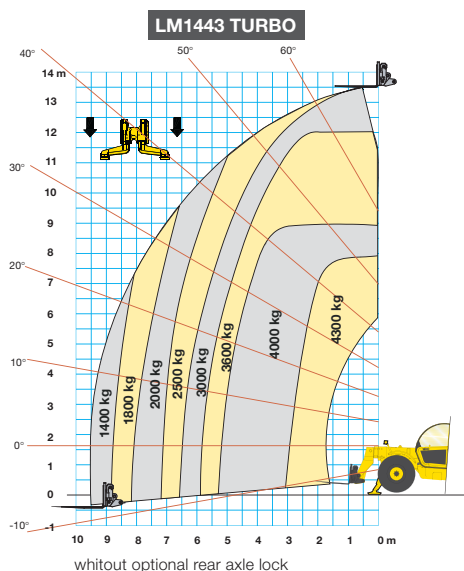
HYDRAULIC SYSTEM	
Type	Load Sensing
Hydraulic controls	Servo
Simultaneous movement	yes
Hydraulic pump	gear
Hydraulic flow	l/min 115
Hydraulic pressure	bar 240

CAPACITIES	
Fuel tank	ltr 135
Hydraulic tank	ltr 180

DIMENSIONS (with MITAS 405/70x24)	A	B	C	D	E	F	G	H	I	K	T	U	V	V <sub>1</sub>	W
mm	1200	3120	1880	6100	1000	2050	402	2450	1100	1260	4552	2730	5390	3890	2445

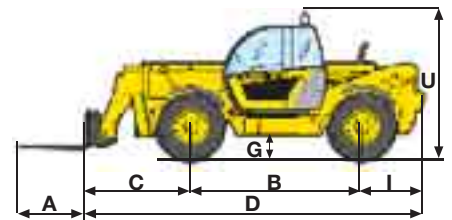
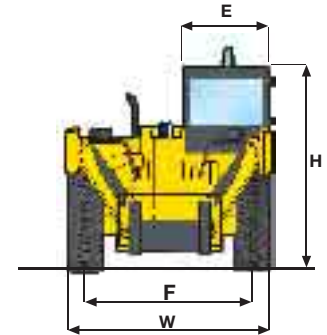
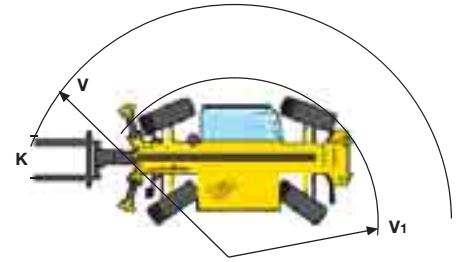


TYRES	
15.5x22.5	MICHELIN
15.5x25	MICHELIN
405/70x24	SOLIDEAL
400/80x24	DUNLOP
405/70x24	MITAS
13.0X24	GOODYEAR



EN 1459/B

PERFORMANCE		LM1745 with stab. up	LM1745 with stab. down
Maximum lift capacity (at 500 mm from fork heel)	kg	4000	4500
Maximum lift height	m	16.24	16.60
Lift capacity at maximum reach	kg	-	450
Lift capacity at maximum lift height	kg	700	3000
Reach fully raised	m	2.00	1.00
Maximum forward reach	m	12.54	12.54
Height with max load (4000/4500 kg)	m	7.40	7.95
Break out force	daN	7750	7750
Operating weight	kg	12300	12300



ENGINE	
Make and model	CNH 4TAA 4.5
Type	Turbo aftercooler
Total displacement	litr 4.5
Net flywheel power (ISO 14396)	kW/hp 88/118
Max torque	Nm 525@1250 rpm

TRANSMISSION	
Type	PowerShift
Forward/Reverse speeds	4/3
Max speed on road**	Km/h 35

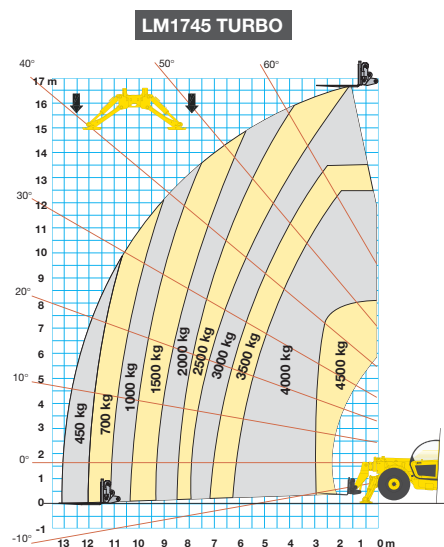
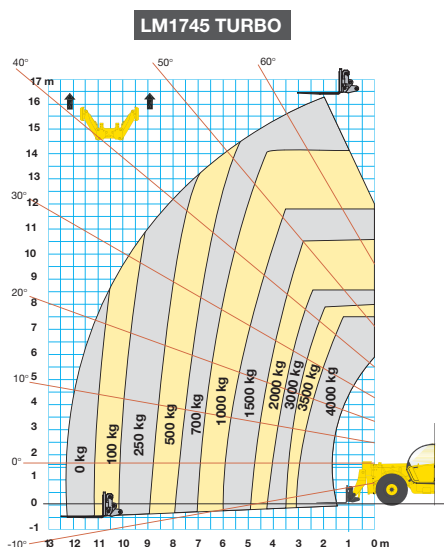
\*\* Max. speed limited according to the country's legislations

HYDRAULIC SYSTEM	
Type	Load Sensing
Hydraulic controls	Servo
Simultaneous movement	yes
Hydraulic pump	gear
Hydraulic flow	l/min 115
Hydraulic pressure	bar 240

TYRES	
15.5x22.5	MICHELIN
15.5x25	MICHELIN
405/70x24	SOLIDEAL
400/80x24	DUNLOP
405/70x24	MITAS
13.0X24	GOODYEAR

CAPACITIES	
Fuel tank	litr 135
Hydraulic tank	litr 180

DIMENSIONS (with MITAS 405/70x24)	A	B	C	D	E	F	G	H	I	K	T	U	V	V <sub>1</sub>	W
mm	1200	3120	2100	6230	1000	2050	402	2450	1100	1260	4598	2730	5445	3890	2445





# NEW HOLLAND. THE POWER OF A GLOBAL BRAND

New Holland is a global brand with a key position in the Construction Equipment business. It supplies a **complete range of 13 product lines and 80 basic models** split into **Compact line** and **Heavy line**. It operates in all the main markets, such as **Europe, North and Latin America, Africa, Asia and Middle East** with the same technology and under the same logo and brand. It manufactures **durable, safe and productive** machines aimed at supporting customers in developing their own business. **Dealers are company partners**. They play an important role to support the brand in their territories through intense professional relationship with Customers. New Holland is reinforced by its **global alliance with Kobelco**: world leader in hydraulic excavator technology.



AT YOUR OWN DEALERSHIP

The information contained in this brochure is intended to be a general nature only. The NEW HOLLAND KOBELCO CONSTRUCTION MACHINERY S.p.A. company may at any time and from time to time, for technical or other necessary reasons, modify any of the details or specifications of the product described in this brochure. Illustrations do not necessarily show products in standard conditions. The dimensions, weights and capacities shown herein, as well as any conversion data used, are approximate only and are subject to variations within normal manufacturing techniques.

Published by NEW HOLLAND KOBELCO CONSTRUCTION MACHINERY S.p.A.  
Printed in Italy - LEADER Firenze - Cod. 73301 423GB - Printed 07/08

Printed on recycled paper  
CoC-FSC 000010 CQ Mixed sources



ELEMENTAL  
CHLORINE  
FREE  
GUARANTEED

FIAT  
GROUP



BUILT AROUND YOU



[www.newholland.com](http://www.newholland.com)