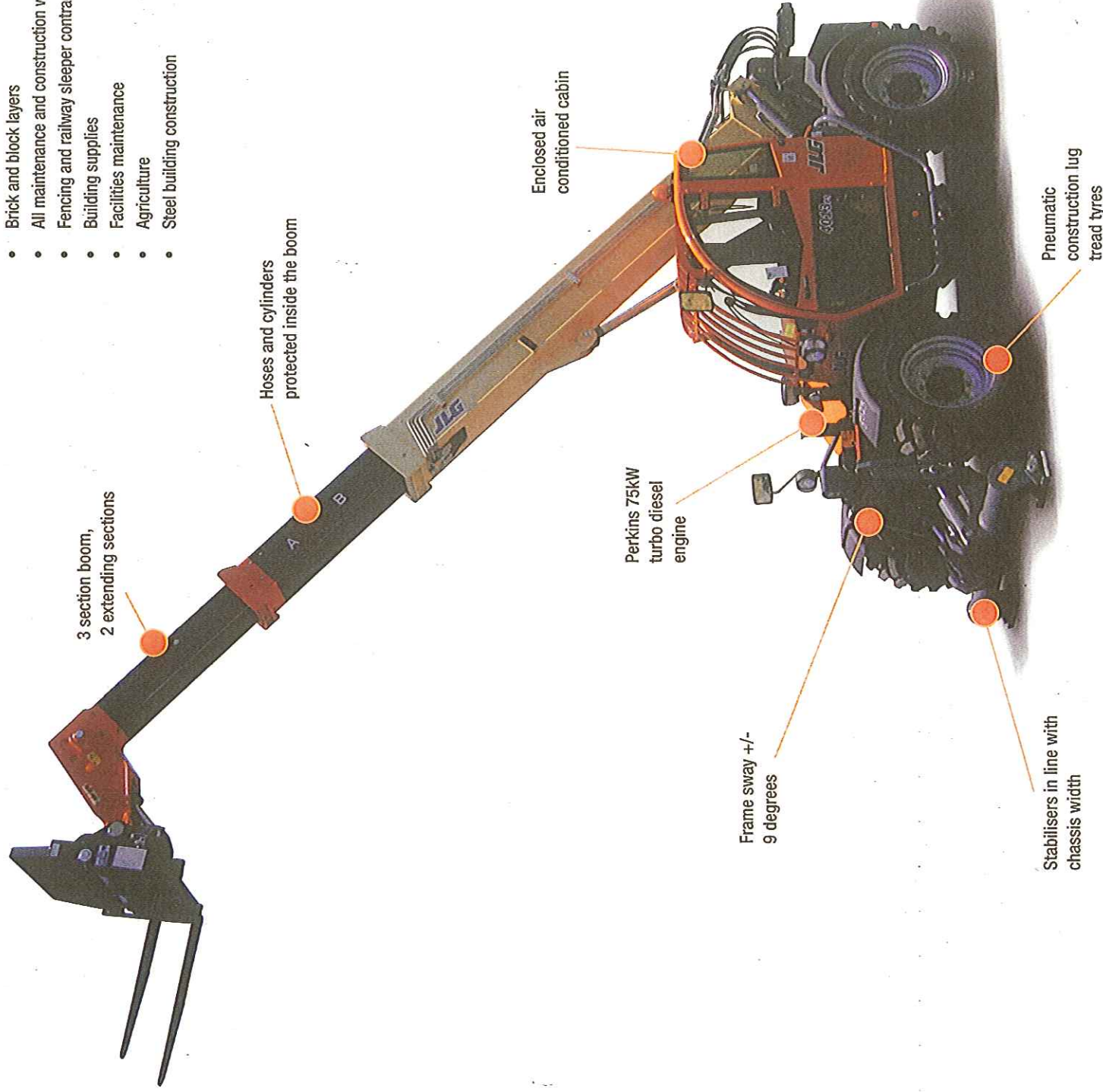


4013PS Telehandler



APPLICATIONS

- Landscape contractors
- Brick and block layers
- All maintenance and construction work.
- Fencing and railway sleeper contractors
- Building supplies
- Facilities maintenance
- Agriculture
- Steel building construction



3 section boom,
2 extending sections

Hoses and cylinders
protected inside the boom

Enclosed air
conditioned cabin

Perkins 75kW
turbo diesel
engine

Frame sway +/-
9 degrees

Stabilisers in line with
chassis width

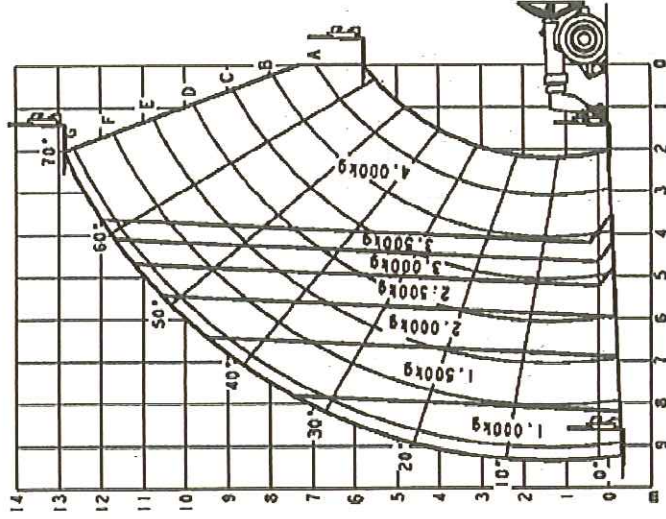
Pneumatic
construction lug
tread tyres

QUESTIONS TO ASK

- What are the ground conditions in the work area?
- What are the site conditions travelling around the site?
- What is the working height needed for the job?
- What is the outreach required for the job?
- What is the rated capacity of the load on forklifts?
- Do you need to lift a freely suspended load, with a jib?

KEY SELLING POINTS

- Smooth control, Powershift 4 speed forward and 3 speed reverse, 4 wheel drive
- Proportional lift, telescope and fork tilt
- Proportional function stabilisers operate in line with chassis
- LMS system (3B6) for use with jib for freely suspended loads
- Oscillating rear axle, assists 4 wheel drive traction
- Front 2 wheel steer, 4 wheel steer, and crab steer
- Hydraulic frame sway (levelling)
- Australian specification air conditioning for operator comfort
- Large construction lug pattern air filled tyres
- Plug in JLG analyser in the cabin, and dash panel display analyser to indicate system functions for servicing and adjustment
- Perkins Engine 4 cylinder turbo. High speed, 4 cylinder, liquid (water cooled). 75kW /100HP engine with pre-glow and post-glow feature reduces emissions



SPECIFICATIONS

Engine – Standard:	
Engine Make	Perkins
Displacement	4.4 Ltr
Gross Output	74.5kW
Transmission:	
Drive	4W
Transmission Type	Powershift
No. of Gears Fwd/Rev	4F, 3R
Tyres:	
Tyres Front Standard	405/70-24
Tyres Rear Standard	405/70-24
Pneumatic Tyre Crossply Type	MPT04 Industrial
Chassis:	
Chassis Levelling	Yes
Steering Type	2W/4W/Crab
Hydraulics:	
Pump Type	Axial Piston
Maximum Flow	132 ltr/min
System Pressure	250 Bar
No. of Auxiliary Services	1
Capacities:	
Fuel Tank	140 Ltr
Static Dimensions:	
Length (Less Forks)	6.0m
Overall Width	2.38m
Height	2.45m
Wheelbase	2.85m
Ground Clearance	0.42m
Stabiliser Spread	2.56m
Turn Radius Over Tyres	3.8m
Turn Radius Over Forks	5.35m
Operating Weight:	11,800kg
Performance – General:	
Load Centre	0.6m
Breakout Force	70kN
Summary – On Tyres:	
Maximum Lift Capacity	4,000kg
Maximum Forward Reach	9.2m
Height with Maximum Capacity	8.0m
Capacity at Maximum Height	2,000kg
Capacity at Maximum Reach	300kg
Maximum Reach with 1,000kg	6.7m
Summary – On Outriggers:	
Maximum Lift Capacity	4,000kg
Maximum Forward Reach	9.2m
Height with Maximum Capacity	13.0m
Capacity at Maximum Height	4,000kg
Capacity at Maximum Reach	1,000kg
Maximum Reach with 1,000kg	9.2m