

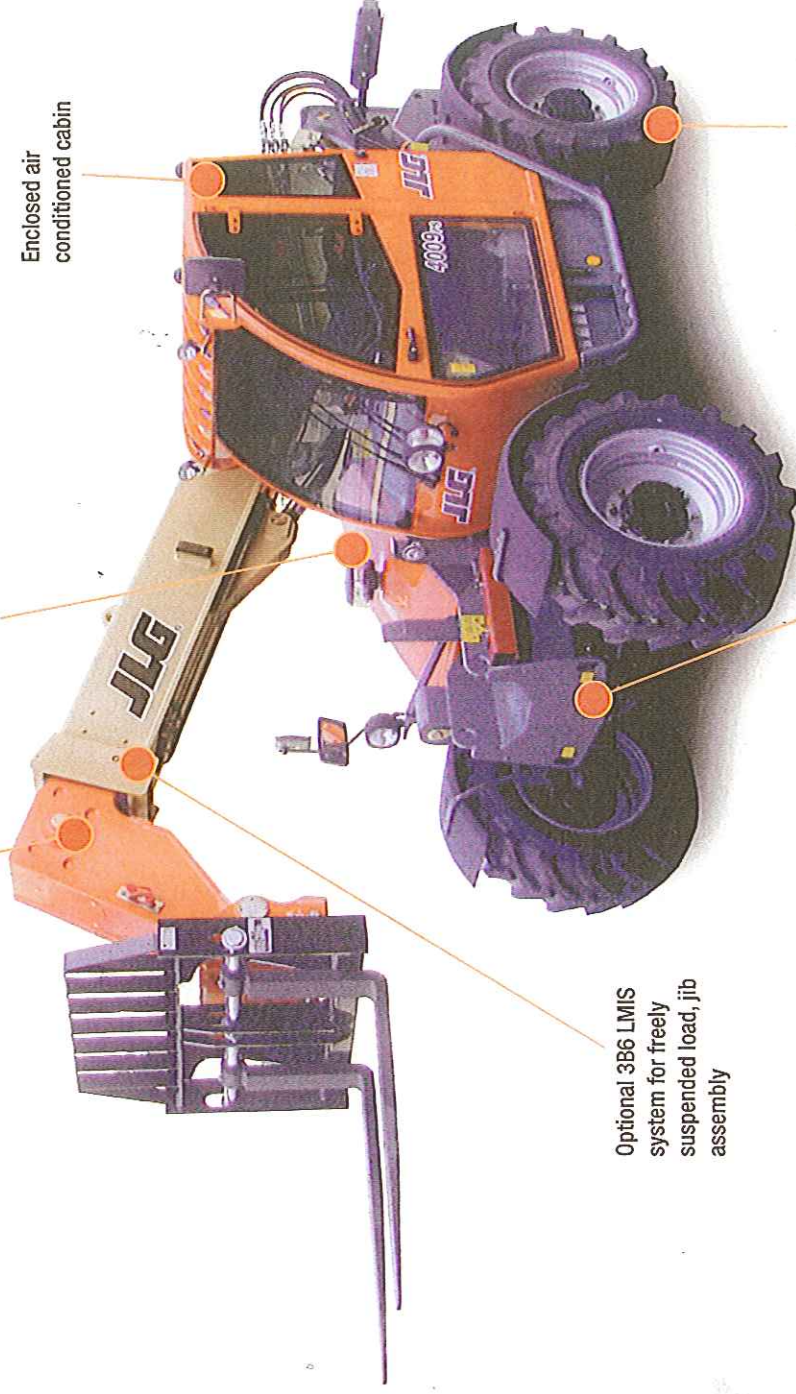
# 4009PS Telehandler

# JLG®

Two boom section  
with protected hose  
and cylinder

Perkins 75kW turbo  
diesel engine

Enclosed air  
conditioned cabin



Optional 3B6 LMIS  
system for freely  
suspended load, jib  
assembly

Pneumatic industrial  
tread pattern tyres

Frame level +/- 9 degree

## APPLICATIONS

- Landscape contractors
- Brick and block layers
- All maintenance and construction work
- Fencing and railway sleeper contractors
- Building supplies
- Facilities maintenance
- Agriculture

# 131 JLG

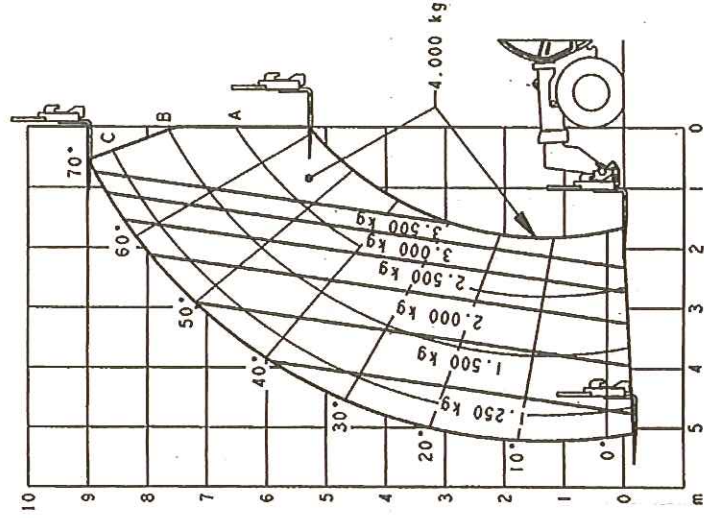
[www.jlg.com.au](http://www.jlg.com.au)

## QUESTIONS TO ASK

- What are the ground conditions in the work area?
- What are the site conditions travelling around the site?
- What is the working height needed for the job?
- What is the outreach required for the job?
- What is the rated capacity of the load on forks?
- Do you need to lift a freely suspended load, with a jib?

## KEY SELLING POINTS

- Smooth control, Powershift 4 speed forward and 3 speed reverse, 4 wheel drive
- Proportional lift, telescope and fork tilt
- LMIS system (3B6) for use with jib for freely suspended loads
- Oscillating rear axle, assists 4 wheel drive traction
- Front 2 wheel steer, 4 wheel steer, and crab steer
- Hydraulic frame sway (levelling)
- Australian specification air conditioning for operator comfort
- Large construction lug pattern air filled tyres
- Plug in JLG analyser in the cabin, and dash panel display analyser to indicate system functions for servicing and adjustment
- Perkins Engine 4 cylinder turbo. High speed, 4 cylinder, liquid (water cooled). 75kW /100HP engine with pre-glow and post-glow feature reduces emissions



## SPECIFICATIONS

### Summary:

Maximum Lift Height	9.0m
Maximum Lift Capacity	4,000kg
Maximum Forward Reach	5.2m
Lift Capacity at Full Height	4,000kg
Lift Capacity at Maximum Reach	1,250kg
Maximum Reach with 1,000kg	4.5m
Lift Height with Maximum Capacity	9.0m
Stabilisers	No

### Engine – Standard:

Engine Make	Perkins
Displacement	4.4 Ltr
Gross Output	74.5kW

### Transmission:

Drive	4W
Transmission Type	Powershift
No. of Gears Fwd/Rev	4F - 3R

### Tyres:

Tyres Front Standard	405/70-24
Tyres Rear Standard	405/70-24
Pneumatic Tyre Type	MPT04 Industrial

### Chassis:

Chassis Levelling	Yes
Steering Type	2W/4W/Crab

### Hydraulics:

Pump Type	Axial Piston
Maximum Flow	132 ltr/min
System Pressure	250 Bar
No. of Auxiliary Services	1

### Capacities:

Fuel Tank	140 Ltr
-----------	---------

### Static Dimensions:

Length to Front of Carriage	5.62m
Overall Width	2.38m
Height Over Cab	2.45m
Wheelbase	2.85m
Ground Clearance	0.42m
Turn Radius Over Tyres	3.8m
Turn Radius Over Forks	5.02m
Weight	9,200kg

### Performance - General:

Load Centre	0.6m
Breakout Force	70kN

### Performance - Unstabilised:

Height with Maximum Capacity	9.0m
Capacity at Full Height	4,000kg
Capacity at Maximum Reach	1,250kg
Maximum Reach with 1,000kg	5.2m